

COL Stew U 2015

This document contains a summary of the information presented at the fourth session, April 25th, and provides links to suitable material for review and further learning.

Homework for Session 5, May 16th.

Those who volunteered to complete tasks for the draft management plan components, send to Judith on 5/14. Refer to attached Homework Sheet.

Review management plans for COL Preserves.

<http://chikamingopenlands.org/files/Critter-Haven-Preserve-Management-Plan-Stew-approved-May-7-2013.pdf>

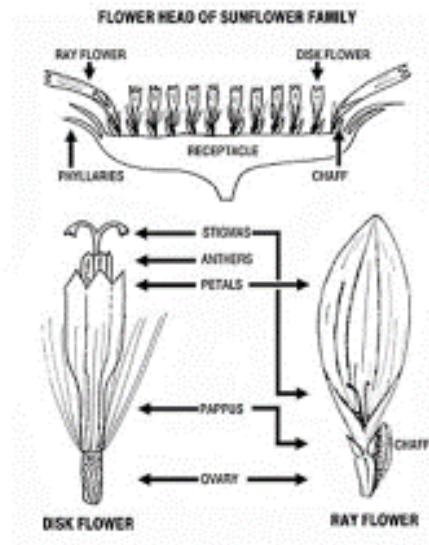
http://chikamingopenlands.org/files/TheWoodsPreserveMgtPlan_Revision_Oct2014.pdf

http://chikamingopenlands.org/files/TheWoodsPreserveMgtPlan_Revision_Oct2014_Appendices1-3.pdf

http://chikamingopenlands.org/files/TheWoodsPreserveMgtPlan_Revision_Oct2014_Appendix4_PhotoDoc.pdf

Plant Biology

Aster Family Flowers



CLICK FOR LARGER IMAGE

Aster Family Flowers

Ray and Tubular Flowers



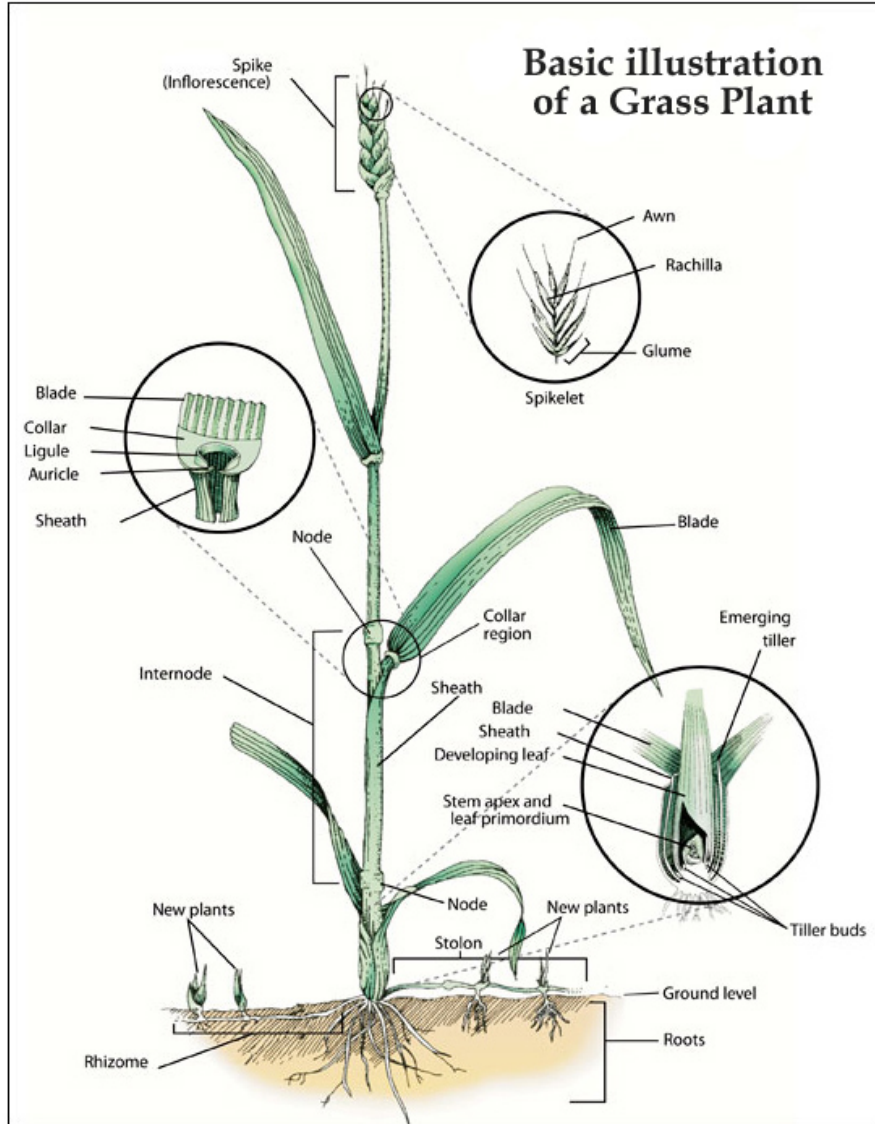
Tubular Flowers Only



Ray Flowers Only

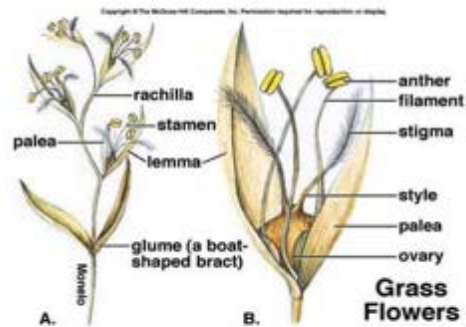


Grass Family



University of Missouri Extension

Grass Flower



Invasive Plants:

Midwest Invasive Species Information Network Training Modules

<http://www.misin.msu.edu/training/>

Garlic Mustard (*Alliaria petiolata*)

<http://www.misin.msu.edu/train/species/GarlicMustard/>

<http://na.fs.fed.us/spfo/invasiveplants/factsheets/pdf/garlic-mustard.pdf>

<https://garlicmustardchallenge.wordpress.com/>

Canada thistle (*Cirsium arvense*)

<http://www.misin.msu.edu/train/species/CanadaThistle/>

<http://www.invasiveplantatlas.org/subject.html?sub=2792>

<http://michiganflora.net/genus.aspx?id=Cirsium>

Common reed (*Phragmites australis*)

<http://www.misin.msu.edu/train/species/Phragmites/>

<http://mnfi.anr.msu.edu/phragmites/native-or-not.cfm>

<http://www.sccrc-roads.org/PDFminutes/DEQ%20Phragmites.pdf>

Report Invasive Species in MI

<http://www.misin.msu.edu/Report/>

MI Invasive Plants Field Guide from Michigan Natural Features Inventory

<http://mnfi.anr.msu.edu/invasive-species/InvasivePlantsFieldGuide.pdf>

MI Prohibited & Restricted Plant Species

http://www.michigan.gov/mdard/0,4610,7-125-1569_16993-11250--,00.html

Photo-Monitoring for Property Management

Why?

Photo-monitoring is an easy, inexpensive method to keep track of changes of a property over time.

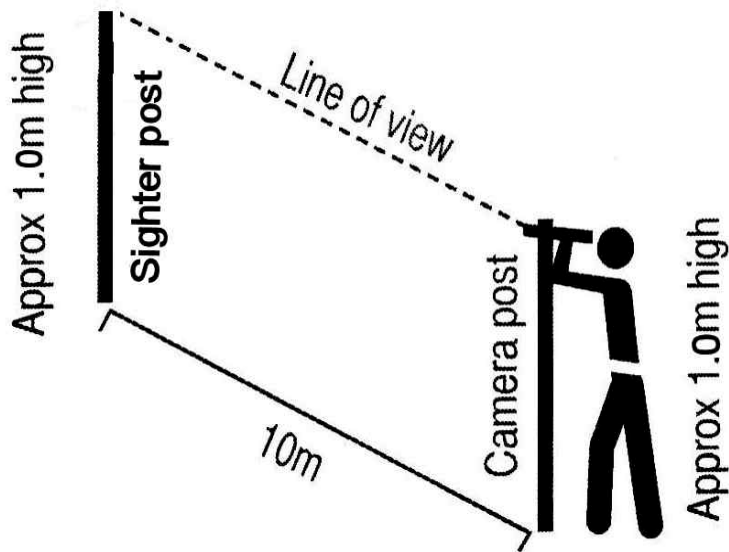
What?

Document management actions, invasive species control, other restoration efforts, seasonal change, changes in landscape features.

How?

Choose a photo focal point and a camera point. Document points with posts & GPS coordinates and document photos with location, coordinates, date/time, and compass heading. (A view of the skyline or other permanent feature may also be used for reference.)

Side view of Photo Monitoring Equipment Setup



Using crowd-sourcing for photo documentation.

<http://monitorchange.org/>

Drafting a Management Plan

Management Plan Example

<http://chikamingopenlands.org/files/Critter-Haven-Preserve-Management-Plan-Stew-approved-May-7-2013.pdf>

Stewardship Tools & Equipment Safety

http://chikamingopenlands.org/files/Stewardship_IPM_Tools_Equipment_Safety.pdf